

Name

Age

Home/Living with

Grade/School

Part time job

Job

Religious

Family MD

RFR**CC****HPI****MDD**

Mood

Sleep

Hours, onset

OSA

Acting out dreams

Interest

Guilt

Energy

Concentration

Appetite/Weight

Psychomotor

SI/HI

GAD

Blanking out

Easy fatigued

Sleep changes

Keyed up/On Edge

Irritability

Muscle tension

ΨOSIS

Delusions

Paranoia

AH/VH

SI/HI

TI/TW/TB

PANIC

Sweating

Trembling

Unsteadiness Dizziness

Depersonalization

Derealization

Excessive HR

Nausea

Tingling

SOB

FEAR of dying

FEAR of losing control

FEAR of crazy

Chest Pain

Chills

Choking

OCD

Obsessions
Compulsions
Washing hands,
clothes etc.
Straightening things,
order
Mental rituals, words,
numbers
Checking things
multiple times
Hoarding
Intrusive thoughts
Suppress/neutralize
Ego-dystonic
> 1 hour / day?

MANIA

Distractibility
Indiscretion
Grandiosity
Flight of Ideas
Activity ↑
Sleep ↓

PTSD

Traumatic Event
Re-experiencing
Avoidance
Unable to Function
Month of symptoms
Arousal

PAST Ψ HX

ADHD

1. Careless mistakes
2. Cannot sustain attention
3. Does not listen when
4. Fails to complete tasks
5. Disorganized
6. Avoids mental effort
7. Loses things
8. Distractible
9. Forgetful

1. Fidgets, squirms in seat
 2. Leaves seat often
 3. Runs and climbs ++
 4. Cannot play quietly
 5. Driven by a motor
 6. Talks excessively
 7. Blurts out answers
 8. Difficulty awaiting turn
- Interrupts

EATING

- Restriction of energy intake
- Disturbance in the way in which one's bodyweight or shape is experienced
- Disturbance in the way in which one's bodyweight or shape is experienced
- Purging exercise
- Periods

MEDICATIONS

ALLERGIES

SOCIAL HX

Born (Immigrated?)

Pregnancy

Milestones

Childhood

Immunizations

Education

Occupation

Relationships

Trauma

Supports

Friends

Bullying

Relationships

Sexual Activity

MEDICAL HX

TBI

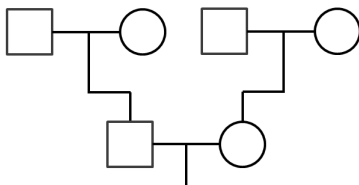
Seizures

Surgeries

Thyroid

LEGAL HX

FAMILY Ψ HX (Ψ, dementia, cardiovascular, suicide)



SUBSTANCE HX

Tolerance, Withdrawal, Cravings, Use more than intended, Can't cut down

Time obtain/use/recover, Fail role obligations, Interpersonal problem, Stop activities

Use despite physical hazard, Use despite psych problem

PLAN

